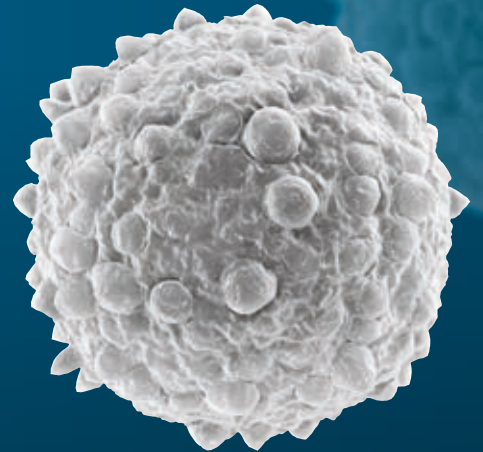
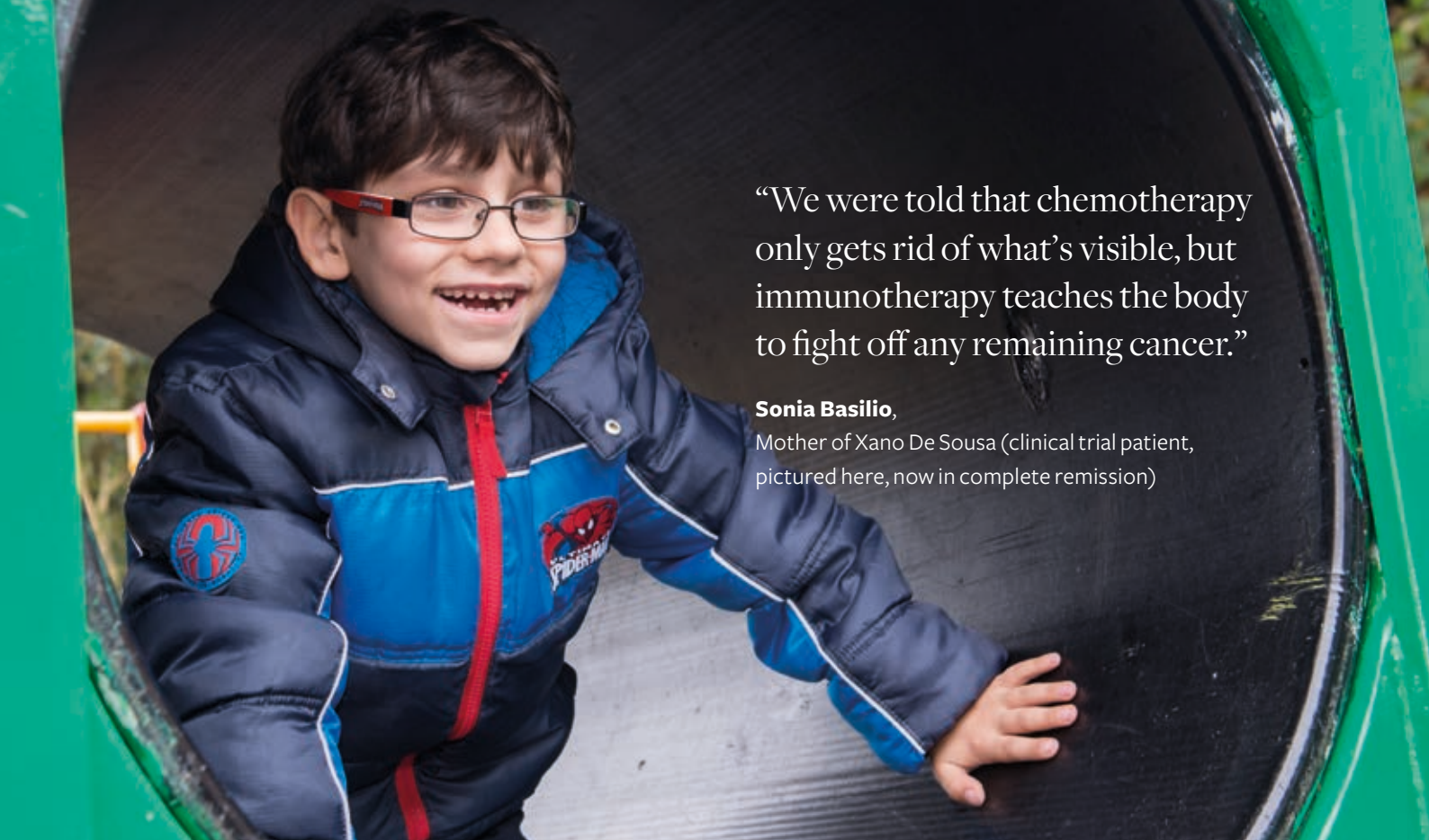


# The cure for cancer? You're it



## Supporting the campaign

Raising £25m to build a world-leading  
**Centre for Cancer Immunology at Southampton**



“We were told that chemotherapy only gets rid of what’s visible, but immunotherapy teaches the body to fight off any remaining cancer.”

**Sonia Basilio,**

Mother of Xano De Sousa (clinical trial patient, pictured here, now in complete remission)

## Making your gift

“We are proud to support a project that will change the way cancer is treated across the world.

We encourage other donors to join us in taking this significant step towards finding new treatments.”

**Philip and Angela Greatrex,**  
donors and University of  
Southampton alumni

The University of Southampton is raising £25m to open the UK’s first dedicated Centre for Cancer Immunology. Our groundbreaking research is using the body’s immune system to defeat cancer. We are seeing outstanding results in our clinical trials. A new state-of-the-art Centre will enable us to accelerate our research, double our clinical trials and save more lives from cancer. Please join us and be part of the cure.

Donations, no matter their size, are vital in helping the campaign reach its goal. We welcome gifts at any level and encourage you to show your support for the campaign by making a gift.

Should you wish to donate a gift of £1,000 or more, we have created a number of giving opportunities to recognise the significant impact your gift will make on the campaign.

### Join the Hartley Circle

By making a gift of £1,000 or more to the University each year, you will automatically join our exclusive Hartley Circle. We now have over 100 members and collectively their generosity is making a huge impact. As a member of the Hartley Circle you will be invited to our campaign events where you will have the opportunity to meet with your fellow members.

# Join one of our exclusive donor groups

We invite you to consider becoming a **Bronze, Silver, Gold or Platinum** donor to help us reach our goal to save even more lives from cancer. By making an unrestricted gift of £10,000 or more to the campaign, you will become an important member of one of our exclusive donor groups. Membership enables you to enjoy special access to campaign information and events, as well as a unique opportunity to become part of history by having your name displayed permanently in the new Centre as a lasting recognition of your generosity.

## **Bronze:**

### **For donors giving a gift between £10,000 and £24,999**

Bronze members will be recognised in the following ways:

- Your name on a list of donors which will be displayed in the Centre as a lasting acknowledgement of your generosity.
- Regular updates on the progress of the campaign which show how your gift is making an impact.
- A report at the end of the campaign explaining how your support made a difference.
- Annual dinner hosted by a member of the Cancer Immunology Campaign team to give you a unique insight into our cancer research.
- Event to celebrate the opening of the Centre with your fellow donors.

## **Silver:**

### **For donors giving a gift between £25,000 and £49,999**

Silver members will be recognised in the same ways as Bronze members with the addition of the following:

- Exclusive invitation to a ‘first look’ event to tour the new facilities and meet members of the research team before the Centre opens to the public.

## **Gold:**

### **For donors giving a gift between £50,000 and £99,999**

Gold members will be recognised in the same ways as Silver members, with the addition of the following:

- Exclusive invitation to a ‘hard-hat tour’ of the new Centre during construction to witness our vision becoming a reality.

## **Platinum:**

### **For donors giving a gift of over £100,000**

Platinum members will be recognised in the same ways as Gold members, with the addition of the following:

- An annual dinner exclusively for platinum members
- A platinum lapel pin

## Name a space or position in the new Centre

As well as joining our exclusive donor groups, you can choose to make a gift to fund a position or space within the new Centre, for example a laboratory or a professorship. More information is available on request.

## Leave a legacy gift

A gift in your will is a fantastic way to help continue the life-saving research the Centre will provide, long after the campaign has finished. We invite you to contact a member of our office on 023 8059 9077 to find out how your legacy gift can create a sustainable future for the Centre.

## Fundraise for the campaign

In addition to supporting the campaign through making a personal gift, we encourage you to consider fundraising on behalf of the University to further help us reach our goal. Whether it's through a marathon, a bake sale or a skydive, becoming one of our community fundraisers is a great way to show your support for the campaign.

More details about how to become a community fundraiser can be found on the campaign's website at

**[www.southampton.ac.uk/youreit/get-involved](http://www.southampton.ac.uk/youreit/get-involved)**

or the University's JustGiving page at

**[www.justgiving.com/university-of-southampton](http://www.justgiving.com/university-of-southampton)**

# The cure for cancer? You're it

## My Details

Name

Address:

Postcode:

Email:

Telephone:

☐ I would like more information about making a gift in my will

☐ I would like my gift to remain anonymous

## Gift Aid Declaration – boost your donation by 25p for every £1 you donate

*giftaid it*

If you are a UK taxpayer, you can make your donation worth more at no extra cost to you. The Government's Gift Aid scheme allows us, as a charity, to reclaim the income tax (or capital gains tax) you have already paid on your donation. Simply tick, sign and date the declaration below. Your address is needed on this form to identify you as a current UK taxpayer.

☐ I want to Gift Aid my donation and any donations I make in the future or have made in the past four years to the University of Southampton. I am a UK tax payer and I understand that if I pay less Income Tax and/or Capital Gains Tax in a tax year than the amount of Gift Aid claimed on all my donations, it is my responsibility to pay any difference.

Signature: \_\_\_\_\_

Date: \_\_\_\_\_

Please notify us if you want to cancel this declaration, you change your name or home address or you no longer pay sufficient tax on your income and/or capital gains.

I would like my gift to support the Campaign for the Centre for Cancer Immunology

## Single Gift

I wish to make a single gift to the **University of Southampton** of:

☐ £50

☐ £100

☐ £250

☐ £500

☐ £750

☐ £1,000

☐ Other Amount: £

☐ I wish to make a single gift by cheque or CAF voucher made payable to the **University of Southampton**.

☐ I wish to make a single gift by credit/debit card. Please charge my Visa/MasterCard/Maestro with the amount stated above.

Card No.             Start date     Expiry date     Issue No

Cardholder's name as it appears on the card  Security No

## Regular Gift

☐ I wish to make a regular gift to the **University of Southampton** of £  per  month/quarter/year (delete as appropriate) via Direct Debit starting on the 5th of     until further notice ☐ or for  year(s) (please use as appropriate).

☐ This direct debit supersedes any former Direct Debits that you hold.

**The start date should be at least one month from the date this form is completed. Please complete the direct debit instructions below.**

## Instruction to your Bank or Building Society to pay by Direct Debit

**Please complete the whole form using a ball point pen and return to**  
Annual Giving, Office of Development and Alumni Relations –  
University of Southampton, Highfield Campus, Southampton SO17 1BJ



Name and full postal address of your Bank or Building Society:

To: The Manager, (Bank or Building Society)

Address:

Postcode:

Name of account holder

Branch Sort Code

Bank/Building Society Account Number

Service User Number:

For University of Southampton office use only

### Instructions to your Bank or Building Society:

Please pay the University of Southampton Direct Debits from the account detailed in this instruction subject to the safeguards assured by the Direct Debit Guarantee. I understand that this instruction may remain with the University of Southampton and, if so, details will be passed electronically to my Bank/Building Society.

Signed

Date

Banks and Building Societies may not accept Direct Debit instructions for some types of accounts. UK Bank Accounts only.

## The Direct Debit Guarantee

- This Guarantee is offered by all banks and building societies that accept instructions to pay Direct Debits
- If there are any changes to the amount, date or frequency of your Direct Debit the University of Southampton will notify you 10 working days in advance of your account being debited or as otherwise agreed. If you request the University of Southampton to collect a payment, confirmation of the amount and date will be given to you at the time of the request
- If an error is made in the payment of your Direct Debit by the University of Southampton or your bank or building society, you are entitled to a full and immediate refund of the amount paid from your bank or building society
- If you receive a refund you are not entitled to, you must pay it back when the University of Southampton asks you to
- You can cancel a Direct Debit at any time by simply contacting your bank or building society. Written confirmation may be required. Please also notify us.



Thank you for your support




**For more information please contact us:**

Office of Development and Alumni Relations  
University of Southampton  
Building 37, Room 3107  
Highfield Campus  
Southampton SO17 1BJ

Tel: +44 (0)23 8059 7156  
Email: [youreit@southampton.ac.uk](mailto:youreit@southampton.ac.uk)  
**[www.southampton.ac.uk/youreit](http://www.southampton.ac.uk/youreit)**

Registered charity no X19140





“Others had given up  
hope but Southampton  
gave me my life back.”

**Patricia Marriott**, clinical trial patient

Tel: +44 (0)23 8059 7156  
Email: [youreit@southampton.ac.uk](mailto:youreit@southampton.ac.uk)  
[www.southampton.ac.uk/youreit](http://www.southampton.ac.uk/youreit)

Registered charity no X19140